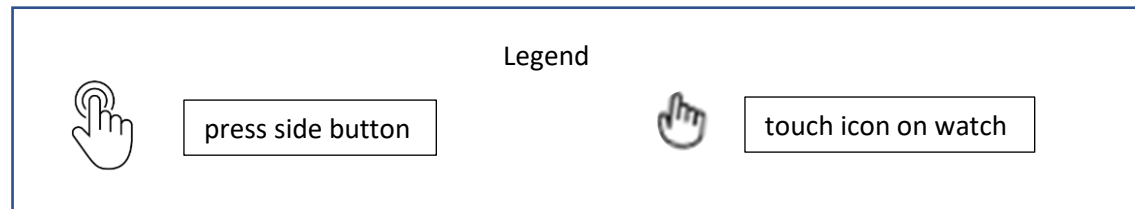




MEDICATION SETUP INSTRUCTIONS

Contents

Medication Setup Instructions.....	2
Insulin Entry Instructions	3
Blood Pressure Entry Instructions.....	4
Blood Uric Acid Entry Instructions	5

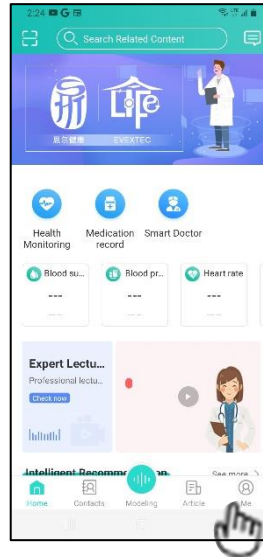


Medication entry is required if the user is taking medication for managing blood sugar and/or blood pressure and/or uric acid. This enables the algorithm to perform better to determine the data.

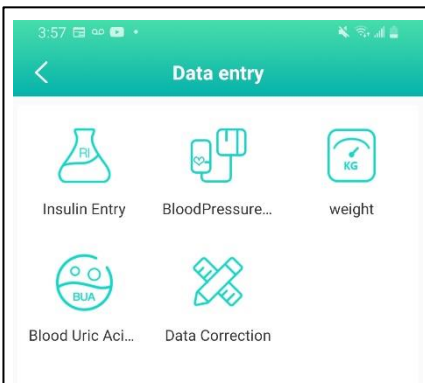
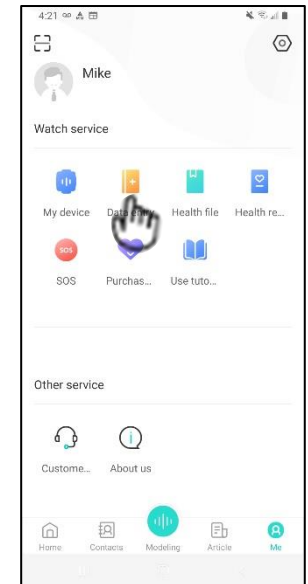
Medication Setup Instructions

The following instructions will guide you to enter your medication for blood glucose, blood pressure and uric acid. You may skip these instructions if you are not under medication.

1. To perform the medication entry, select the {Me} icon on your mApp.



2. Select the {Data Entry} icon.



3. Select Insulin Entry / Blood Pressure / Blood uric acid and follow the steps listed below

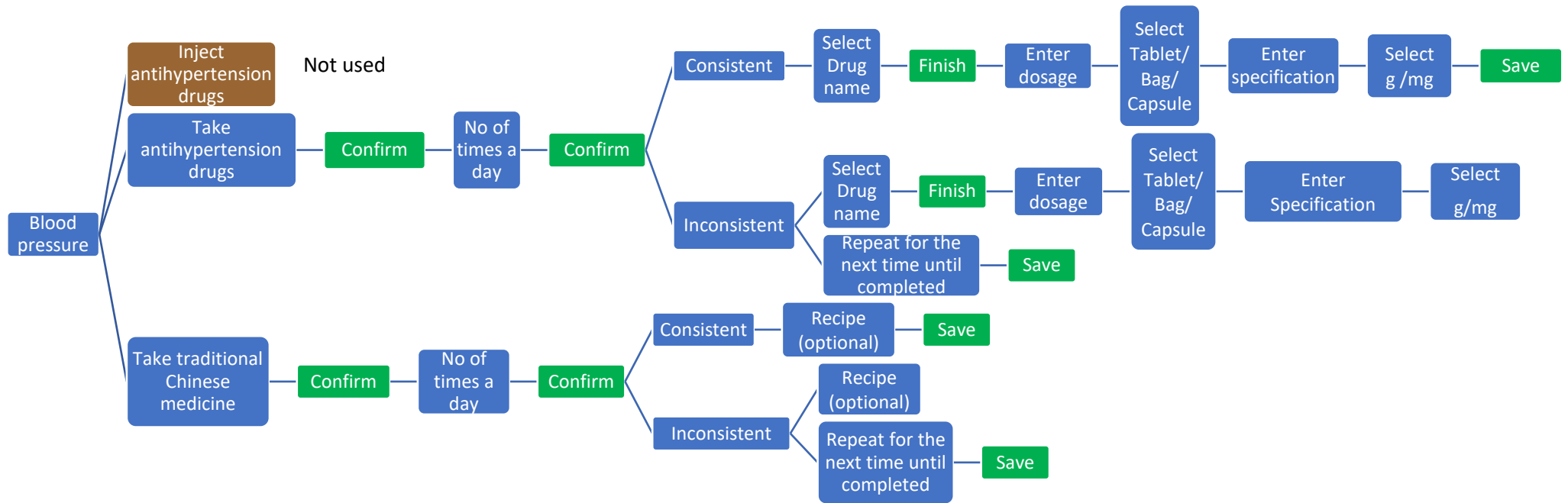


Insulin Entry Instructions





Blood Pressure Entry Instructions





Blood Uric Acid Entry Instructions

